



License No. 800025015  
FL License # CMTL-0003  
CLIA No. 10D1094068

# Certificate of Analysis

## Compliance Test

**NANOJUANA**  
2484 TUCKERSTONE PKWY  
TUCKER, GA 30084

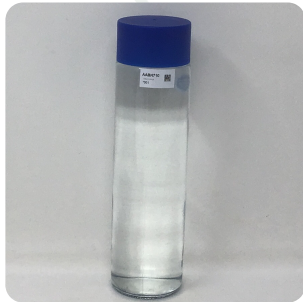
Batch # 0001  
Batch Date: 2021-06-24  
Extracted From: Hemp

Test Reg State: Florida

Order # NAN210624-040018  
Order Date: 2021-06-24  
Sample # AABN710

Sampling Date: 2021-06-28  
Lab Batch Date: 2021-06-28  
Completion Date: 2021-07-19

Volume: 500 ml



Product Image

Potency  
Tested

Terpenes  
Tested

Heavy Metals  
Passed

Mycotoxins  
Passed

Pesticides  
Passed

Pathogenic  
Microbiology  
Passed

Listeria  
Monocytogenes  
Passed

### Delta 8/Delta 10 Potency 12

Specimen Weight: 990.000 g

Analyte	Dilution (1:n)	LOD (%)	LOQ (%)	Result (µg/ml)
CBC	8.000	0.000018	0.001	
Delta-10 THC	400.000	0.000003	0.001	
Delta-9 THC	8.000	0.000013	0.001	
Delta-8 THC	8.000	0.000026	0.001	66.720
CBD	8.000	0.000054	0.001	
THCV	8.000	0.000007	0.001	
THCA-A	8.000	0.000032	0.001	
CBN	8.000	0.000014	0.001	
CBGA	8.000	0.00008	0.001	
CBG	8.000	0.000248	0.001	
CBDV	8.000	0.000065	0.001	
CBDA	8.000	0.00001	0.001	

### Tested (LCUV)

### Potency Summary

Total Delta 8 33.360mg	Total Delta 10 ND
Total THC ND	Total CBD ND
Total CBG ND	Total CBN ND
Other Cannabinoids ND	Total Cannabinoids 33.360mg

### Terpenes Summary

Analyte	Result (mg/g) (%)
<b>Total Terpenes: 0.000%</b>	

Detailed Terpenes Analysis is on the following page

Xueli Gao  
Ph.D., DABT  
Lab Toxicologist

Aixia Sun  
D.H.Sc., M.Sc., B.Sc., MT (AAB)  
Lab Director/Principal Scientist



Definitions and Abbreviations used in this report: \*Total CBD = CBD + (CBD-A \* 0.877), \*Total THC = THCA-A \* 0.877 + Delta 9 THC, \*CBG Total = (CBGA \* 0.877) + CBG, \*CBN Total = (CBNA \* 0.877) + CBN, \*Other Cannabinoids Total = CBC + CBDV + THCV + THCVA, \*Total Detected Cannabinoids = CBD Total + CBG Total + CBN Total + THC Total + CBC + CBDV + THCV + THCVA, \*Analyte Details above show the Dry Weight Concentrations unless specified as 12% moisture concentration. (mg/ml) = Milligrams per Milliliter, LOQ = Limit of Quantitation, LOD = Limit of Detection, Dilution = Dilution Factor (ppb) = Parts per Billion, (%) = Percent, (cfu/g) = Colony Forming Unit per Gram (cfu/g) = Colony Forming Unit per Gram, LOD = Limit of Detection, (µg/g) = Microgram per Gram (ppm) = Parts per Million, (ppm) = (µg/g), (aw) = aw (area ratio) = Area Ratio, (mg/Kg) = Milligram per Kilogram, \*Measurement of Uncertainty = +/- 5%



This report shall not be reproduced, without written approval, from ACS Laboratory. The results of this report relate only to the material or product analyzed. Test results are confidential unless explicitly waived otherwise. Accredited by a third-party accrediting body as a competent testing laboratory pursuant to ISO/IEC 17025 of the International Organization for Standardization.



License No. 800025015  
FL License # CMTL-0003  
CLIA No. 10D1094068

# Certificate of Analysis

Compliance Test

**NANOJUANA**  
2484 TUCKERSTONE PKWY  
TUCKER, GA 30084

Batch # 0001  
Batch Date: 2021-06-24  
Extracted From: Hemp

Test Reg State: Florida

Order # NAN210624-040018  
Order Date: 2021-06-24  
Sample # AABN710

Sampling Date: 2021-06-28  
Lab Batch Date: 2021-06-28  
Completion Date: 2021-07-19

Volume: 500 ml



## Terpenes - FL

Specimen Weight: 2026.300 mg

Tested  
(GC/GCMS)

Dilution Factor: 2500.000

Analyte	LOQ (%)	Result (mg/g)	(%)	Analyte	LOQ (%)	Result (mg/g)	(%)
(+)-Cedrol	0.02	<LOQ	<LOQ	Nerol	0.02	<LOQ	<LOQ
Geraniol	0.02	<LOQ	<LOQ	Geranyl acetate	0.02	<LOQ	<LOQ
Guaio	0.02	<LOQ	<LOQ	Hexahydrothymol	0.02	<LOQ	<LOQ
Isoborneol	0.02	<LOQ	<LOQ	Isopulegol	0.02	<LOQ	<LOQ
Linalool	0.02	<LOQ	<LOQ	Ocimene	0.014	<LOQ	<LOQ
Fenchyl Alcohol	0.02	<LOQ	<LOQ	Pulegone	0.02	<LOQ	<LOQ
Sabinene	0.02	<LOQ	<LOQ	Sabinene Hydrate	0.02	<LOQ	<LOQ
Terpineol	0.02	<LOQ	<LOQ	Terpinolene	0.02	<LOQ	<LOQ
trans-Caryophyllene	0.02	<LOQ	<LOQ	trans-Nerolidol	0.02	<LOQ	<LOQ
Gamma-Terpinene	0.02	<LOQ	<LOQ	Fenchone	0.02	<LOQ	<LOQ
(R)-(+)-Limonene	0.02	<LOQ	<LOQ	alpha-Terpinene	0.02	<LOQ	<LOQ
3-Carene	0.02	<LOQ	<LOQ	alpha-Bisabolol	0.02	<LOQ	<LOQ
alpha-Cedrene	0.02	<LOQ	<LOQ	alpha-Humulene	0.02	<LOQ	<LOQ
alpha-Phellandrene	0.02	<LOQ	<LOQ	alpha-Pinene	0.02	<LOQ	<LOQ
Farnesene	0.02	<LOQ	<LOQ	beta-Myrcene	0.02	<LOQ	<LOQ
beta-Pinene	0.02	<LOQ	<LOQ	Borneol	0.04	<LOQ	<LOQ
Camphene	0.02	<LOQ	<LOQ	Camphors	0.04	<LOQ	<LOQ
Caryophyllene oxide	0.02	<LOQ	<LOQ	cis-Nerolidol	0.02	<LOQ	<LOQ
Eucalyptol	0.02	<LOQ	<LOQ	Valencene	0.02	<LOQ	<LOQ

Total Terpenes: 0.000%

*Xueli Gao*  
Xueli Gao Lab Toxicologist  
Ph.D., DABT

*Aixia Sun*  
Aixia Sun Lab Director/Principal Scientist  
D.H.Sc., M.Sc., B.Sc., MT (AAB)



Definitions and Abbreviations used in this report: \*Total CBD = CBD + (CBD-A \* 0.877), \*Total THC = THCA-A \* 0.877 + Delta 9 THC, \*CBG Total = (CBGA \* 0.877) + CBG, \*CBN Total = (CBNA \* 0.877) + CBN, \*Other Cannabinoids Total = CBC + CBDV + THCV + THCV-A, \*Total Detected Cannabinoids = CBD Total + CBG Total + CBN Total + THC Total + CBC + CBDV + THCV + THCV-A, \*Analyte Details above show the Dry Weight Concentrations unless specified as 12% moisture concentration. (mg/ml) = Milligrams per Milliliter, LOQ = Limit of Quantitation, LOD = Limit of Detection, Dilution = Dilution Factor (ppb) = Parts per Billion, (%) = Percent, (cfu/g) = Colony Forming Unit per Gram (cfu/g) = Colony Forming Unit per Gram, , LOD = Limit of Detection, (µg/g) = Microgram per Gram (ppm) = Parts per Million, (ppm) = (µg/g), (aw) = aw (area ratio) = Area Ratio, (mg/Kg) = Milligram per Kilogram, \*Measurement of Uncertainty = +/- 5%



This report shall not be reproduced, without written approval, from ACS Laboratory. The results of this report relate only to the material or product analyzed. Test results are confidential unless explicitly waived otherwise. Accredited by a third-party accrediting body as a competent testing laboratory pursuant to ISO/IEC 17025 of the International Organization for Standardization.



License No. 800025015  
FL License # CMTL-0003  
CLIA No. 10D1094068

# Certificate of Analysis

Compliance Test

**NANOJUANA**  
2484 TUCKERSTONE PKWY  
TUCKER, GA 30084

Batch # 0001  
Batch Date: 2021-06-24  
Extracted From: Hemp

Test Reg State: Florida

Order # NAN210624-040018  
Order Date: 2021-06-24  
Sample # AABN710

Sampling Date: 2021-06-28  
Lab Batch Date: 2021-06-28  
Completion Date: 2021-07-19

Volume: 500 ml

## Heavy Metals

Specimen Weight: 246.700 mg

Passed  
(ICP-MS)

Dilution Factor: 2.000

Analyte	LOQ (ppb)	Action Level (ppb)	Result (ppb)	Analyte	LOQ (ppb)	Action Level (ppb)	Result (ppb)
Arsenic (As)	100	1500	<LOQ	Cadmium (Cd)	100	500	<LOQ
Lead (Pb)	100	500	<LOQ	Mercury (Hg)	100	3000	<LOQ

## Mycotoxins

Specimen Weight: 155.400 mg

Passed  
(LCMS)

Dilution Factor: 9.653

Analyte	LOQ (ppb)	Action Level (ppb)	Result (ppb)	Analyte	LOQ (ppb)	Action Level (ppb)	Result (ppb)
Aflatoxin B1	6	20	<LOQ	Aflatoxin B2	6	20	<LOQ
Aflatoxin G1	6	20	<LOQ	Aflatoxin G2	6	20	<LOQ
Ochratoxin A	12	20	<LOQ				

*Xueli Gao*  
Xueli Gao  
Lab Toxicologist  
Ph.D., DABT

*Aixia Sun*  
Aixia Sun  
Lab Director/Principal Scientist  
D.H.Sc., M.Sc., B.Sc., MT (AAB)



Definitions and Abbreviations used in this report: \*Total CBD = CBD + (CBD-A \* 0.877), \*Total THC = THCA-A \* 0.877 + Delta 9 THC, \*CBG Total = (CBGA \* 0.877) + CBG, \*CBN Total = (CBNA \* 0.877) + CBN, \*Other Cannabinoids Total = CBC + CBDV + THCV + THCV-A, \*Total Detected Cannabinoids = CBD Total + CBG Total + CBN Total + THC Total + CBC + CBDV + THCV + THCV-A, \*Analyte Details above show the Dry Weight Concentrations unless specified as 12% moisture concentration. (mg/ml) = Milligrams per Milliliter, LOQ = Limit of Quantitation, LOD = Limit of Detection, Dilution = Dilution Factor (ppb) = Parts per Billion, (%) = Percent, (cfu/g) = Colony Forming Unit per Gram (cfu/g) = Colony Forming Unit per Gram, , LOD = Limit of Detection, (µg/g) = Microgram per Gram (ppm) = Parts per Million, (ppm) = (µg/g), (aw) = aw (area ratio) = Area Ratio, (mg/Kg) = Milligram per Kilogram, \*Measurement of Uncertainty = +/- 5%



This report shall not be reproduced, without written approval, from ACS Laboratory. The results of this report relate only to the material or product analyzed. Test results are confidential unless explicitly waived otherwise. Accredited by a third-party accrediting body as a competent testing laboratory pursuant to ISO/IEC 17025 of the International Organization for Standardization.



License No. 800025015  
FL License # CMTL-0003  
CLIA No. 10D1094068

# Certificate of Analysis

Compliance Test

**NANOJUANA**  
2484 TUCKERSTONE PKWY  
TUCKER, GA 30084

Batch # 0001  
Batch Date: 2021-06-24  
Extracted From: Hemp

Test Reg State: Florida

Order # NAN210624-040018  
Order Date: 2021-06-24  
Sample # AABN710

Sampling Date: 2021-06-28  
Lab Batch Date: 2021-06-28  
Completion Date: 2021-07-19

Volume: 500 ml

**Pesticides FL V4** **Passed**  
(LCMS/GCMS)

Specimen Weight: 155.400 mg

Dilution Factor: 9.653

Analyte	LOQ (ppb)	Action Level (ppb)	Result (ppb)	Analyte	LOQ (ppb)	Action Level (ppb)	Result (ppb)
Abamectin	28.23	300	<LOQ	Acephate	30	3000	<LOQ
Acequinocyl	48	2000	<LOQ	Acetamiprid	30	3000	<LOQ
Aldicarb	30	100	<LOQ	Azoxystrobin	10	3000	<LOQ
Bifenazate	30	3000	<LOQ	Bifenthrin	30	500	<LOQ
Boscalid	10	3000	<LOQ	Captan	30	3000	<LOQ
Carbaryl	10	500	<LOQ	Carbofuran	10	100	<LOQ
Chlorantraniliprole	10	3000	<LOQ	Chlordane	10	100	<LOQ
Chlorfenapyr	30	100	<LOQ	Chlormequat Chloride	10	3000	<LOQ
Chlorpyrifos	30	100	<LOQ	Clofentazine	30	500	<LOQ
Coumaphos	48	100	<LOQ	Cyfluthrin	30	1000	<LOQ
Cypermethrin	30	1000	<LOQ	Daminozide	30	100	<LOQ
Diazinon	30	200	<LOQ	Dichlorvos	30	100	<LOQ
Dimethoate	30	100	<LOQ	Dimethomorph	48	3000	<LOQ
Ethoprophos	30	100	<LOQ	Etofenprox	30	100	<LOQ
Etoxazole	30	1500	<LOQ	Fenhexamid	10	3000	<LOQ
Fenoxycarb	30	100	<LOQ	Fenpyroximate	30	2000	<LOQ
Fipronil	30	100	<LOQ	Flonicamid	30	2000	<LOQ
Fludioxonil	48	3000	<LOQ	Hexythiazox	30	2000	<LOQ
Imazalil	30	100	<LOQ	Imidacloprid	30	3000	<LOQ
Kresoxim Methyl	30	1000	<LOQ	Malathion	30	2000	<LOQ
Metaxyl	10	3000	<LOQ	Methiocarb	30	100	<LOQ
Methomyl	30	100	<LOQ	methyl-Parathion	10	100	<LOQ
Mevinphos	10	100	<LOQ	Myclobutanil	30	3000	<LOQ
Naled	30	500	<LOQ	Oxamyl	30	500	<LOQ
Paclotrazol	30	100	<LOQ	Pentachloronitrobenzene	10	200	<LOQ
Permethrin	30	1000	<LOQ	Phosmet	30	200	<LOQ
Piperonylbutoxide	30	3000	<LOQ	Prallethrin	30	400	<LOQ
Propiconazole	30	1000	<LOQ	Propoxur	30	100	<LOQ
Pyrethrins	30	1000	<LOQ	Pyridaben	30	3000	<LOQ
Spinetoram	10	3000	<LOQ	Spinosad	30	3000	<LOQ
Spiromesifen	30	3000	<LOQ	Spirotetramat	30	3000	<LOQ
Spiroxamine	30	100	<LOQ	Tebuconazole	30	1000	<LOQ
Thiacloprid	30	100	<LOQ	Thiamethoxam	30	1000	<LOQ
Trifloxystrobin	30	3000	<LOQ				

*Xueli Gao*  
Xueli Gao Lab Toxicologist  
Ph.D., DABT

*Aixia Sun*  
Aixia Sun Lab Director/Principal Scientist  
D.H.Sc., M.Sc., B.Sc., MT (AAB)



Definitions and Abbreviations used in this report: \*Total CBD = CBD + (CBD-A \* 0.877), \*Total THC = THCA-A \* 0.877 + Delta 9 THC, \*CBG Total = (CBGA \* 0.877) + CBG, \*CBN Total = (CBNA \* 0.877) + CBN, \*Other Cannabinoids Total = CBC + CBDV + THCV + THCV-A, \*Total Detected Cannabinoids = CBD Total + CBG Total + CBN Total + THC Total + CBC + CBDV + THCV + THCV-A, \*Analyte Details above show the Dry Weight Concentrations unless specified as 12% moisture concentration. (mg/ml) = Milligrams per Milliliter, LOQ = Limit of Quantitation, LOD = Limit of Detection, Dilution = Dilution Factor (ppb) = Parts per Billion, (%) = Percent, (cfu/g) = Colony Forming Unit per Gram (cfu/g) = Colony Forming Unit per Gram, , LOD = Limit of Detection, (µg/g) = Microgram per Gram (ppm) = Parts per Million, (ppm) = (µg/g), (aw) = aw (area ratio) = Area Ratio, (mg/Kg) = Milligram per Kilogram, \*Measurement of Uncertainty = +/- 5%



This report shall not be reproduced, without written approval, from ACS Laboratory. The results of this report relate only to the material or product analyzed. Test results are confidential unless explicitly waived otherwise. Accredited by a third-party accrediting body as a competent testing laboratory pursuant to ISO/IEC 17025 of the International Organization for Standardization.



License No. 800025015  
FL License # CMTL-0003  
CLIA No. 10D1094068

# Certificate of Analysis

Compliance Test

**NANOJUANA**  
2484 TUCKERSTONE PKWY  
TUCKER, GA 30084

Batch # 0001  
Batch Date: 2021-06-24  
Extracted From: Hemp

Test Reg State: Florida

Order # NAN210624-040018  
Order Date: 2021-06-24  
Sample # AABN710

Sampling Date: 2021-06-28  
Lab Batch Date: 2021-06-28  
Completion Date: 2021-07-19

Volume: 500 ml

**Pathogenic Microbiology SAE (MicroArray)** **Passed**  
(Micro Array)

Specimen Weight: 1013.920 mg

Dilution Factor: 1.000

Analyte	Result (cfu/g)	Analyte	Result (cfu/g)
Aspergillus flavus	Absence in 1g	Aspergillus fumigatus	Absence in 1g
Aspergillus niger	Absence in 1g	Aspergillus terreus	Absence in 1g
Salmonella	Absence in 1g	STEC E. Coli	Absence in 1g

**Listeria Monocytogenes** **Passed**  
(qPCR)

Specimen Weight: 1011.500 mg

Dilution Factor: 1.000

Analyte	Result
Listeria Monocytogenes	Absence in 1g

Xueli Gao  
Ph.D., DABT  
Lab Toxicologist

Aixia Sun  
D.H.Sc., M.Sc., B.Sc., MT (AAB)  
Lab Director/Principal Scientist



Definitions and Abbreviations used in this report: \*Total CBD = CBD + (CBD-A \* 0.877), \*Total THC = THCA-A \* 0.877 + Delta 9 THC, \*CBG Total = (CBGA \* 0.877) + CBG, \*CBN Total = (CBNA \* 0.877) + CBN, \*Other Cannabinoids Total = CBC + CBDV + THCV + THCV-A, \*Total Detected Cannabinoids = CBD Total + CBG Total + CBN Total + THC Total + CBC + CBDV + THCV + THCV-A, \*Analyte Details above show the Dry Weight Concentrations unless specified as 12% moisture concentration. (mg/ml) = Milligrams per Milliliter, LOQ = Limit of Quantitation, LOD = Limit of Detection, Dilution = Dilution Factor (ppb) = Parts per Billion, (%) = Percent, (cfu/g) = Colony Forming Unit per Gram (cfu/g) = Colony Forming Unit per Gram, , LOD = Limit of Detection, (µg/g) = Microgram per Gram (ppm) = Parts per Million, (ppm) = (µg/g), (aw) = aw (area ratio) = Area Ratio, (mg/Kg) = Milligram per Kilogram, \*Measurement of Uncertainty = +/- 5%



This report shall not be reproduced, without written approval, from ACS Laboratory. The results of this report relate only to the material or product analyzed. Test results are confidential unless explicitly waived otherwise. Accredited by a third-party accrediting body as a competent testing laboratory pursuant to ISO/IEC 17025 of the International Organization for Standardization.