



Certificate of Analysis
Compliance Test

Client Information:

Laurelcrest Labs
1270 NE ALPHA DRIVE
MCMINNVILLE, OR 97128

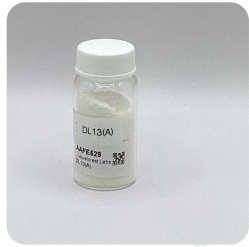
Batch # DL13(A)
Batch Date: 2024-01-05
Extracted From: Industrial Hemp

Test Reg State: Florida

Order # LAU240105-010001
Order Date: 2024-01-05
Sample # AAFE529

Sampling Date: 2024-01-09
Lab Batch Date: 2024-01-09
Completion Date: 2024-01-15

Initial Gross Weight: 22.844 g



Product Image



Potency
Tested



Microbiology Petrifilm
Passed

Potency 10
Specimen Weight: 503.130 mg

Analyte	Dilution (1:n)	LOD (%)	LOQ (%)	Result		SOP13.001 (LCUV)
				(mg/g)	(%)	
CBD	50.000	5.40E-5	0.015	9.870	0.987	█
CBC	50.000	1.80E-5	0.015	<LOQ	<LOQ	
CBDA	50.000	1.00E-5	0.015	<LOQ	<LOQ	
CBDV	50.000	6.50E-5	0.015	<LOQ	<LOQ	
CBG	50.000	2.48E-4	0.015	<LOQ	<LOQ	
CBGA	50.000	8.00E-5	0.015	<LOQ	<LOQ	
CBN	50.000	1.40E-5	0.015	<LOQ	<LOQ	
Delta-9 THC	50.000	1.30E-5	0.015	<LOQ	<LOQ	
THCA-A	50.000	3.20E-5	0.015	<LOQ	<LOQ	
THCV	50.000	7.00E-6	0.015	<LOQ	<LOQ	
Total Active CBD	50.000			9.870	0.987	█
Total Active THC	50.000			<LOQ	<LOQ	

Tested



Potency Summary

Total Active THC None Detected	Total Active CBD 0.987%
Total CBG None Detected	Total CBN None Detected
Other Cannabinoids 0%	Total Cannabinoids 0.987%

Aixia Sun
Aixia Sun Lab Director/Principal Scientist
D.H.Sc., M.Sc., B.Sc., MT (AAB)



Definitions and Abbreviations used in this report: Total Active CBD = CBD + (CBD-A * 0.877), *Total CBDV = CBDV + (CBDVA * 0.87), Total Active THC = THCA-A * 0.877 + Delta 9 THC, Total THC = THCV + (THCVA * 0.87), CBG Total = (CBGA * 0.877) + CBG, CBN Total = (CBNA * 0.877) + CBN, Total CBC = CBC + (CBCA * 0.877), Total THC-O-Acetate = Delta 8 THC-O-Acetate + Delta 9 THC-O-Acetate, Total THCP = Delta8-THCP + Delta9-THCP, Other Cannabinoids Total = Total Cannabinoids - All the listed cannabinoids on the summary section, Total Detected Cannabinoids = Delta6a10a-THC + Delta8-THC + Total CBN + CBT + CBE + Delta8-THCV + Total CBG + Total CBD + Total THCV + CBL + Total THC + Total CBC + Total CBDV + Delta10-THC + Total THC-O-Acetate + Total THCP. (mg/ml) = Milligrams per Milliliter, LOQ = Limit of Quantitation, LOD = Limit of Detection, Dilution = Dilution Factor, (ppb) = Parts per Billion, (%) = Percent, (cfu/g) = Colony Forming Unit per Gram, (µg/g) = Microgram per Gram, (ppm) = Parts per Million, (ppm) = (µg/g), (aw) = Water Activity, (mg/Kg) = Milligram per Kilogram. ACS uses simple acceptance criteria. Passed - Analyte/microbe is not detected or is at the level below the action limit per FL rule 64ER20-39, 5K-4.036, 5K-4.034. Failed - Analyte/microbe is at the level that equal or above the action limit per FL rule 64ER20-39, 5K-4.036, 5K-4.034 Sample not received via laboratory sampling. This report shall not be reproduced, without written approval, from ACS Laboratory. The results of this report relate only to the material or product analyzed. Test results are confidential unless explicitly waived otherwise. ACS Laboratory is accredited to the ISO/IEC 17025:2017 Standard.





Certificate of Analysis
Compliance Test

Client Information:

Laurelcrest Labs
1270 NE ALPHA DRIVE
MCMINNVILLE, OR 97128

Batch # DL13(A)
Batch Date: 2024-01-05
Extracted From: Industrial Hemp

Test Reg State: Florida

Order # LAU240105-010001
Order Date: 2024-01-05
Sample # AAFE529

Sampling Date: 2024-01-09
Lab Batch Date: 2024-01-09
Completion Date: 2024-01-15

Initial Gross Weight: 22.844 g

Microbiology (Petrifilm)
Specimen Weight: 998.300 mg

Passed
SOP13.003 (Petrifilm)

Dilution Factor: 1.000

Analyte	LOQ (cfu/g)	Action Level (cfu/g)	Result (cfu/g)	Analyte	LOQ (cfu/g)	Action Level (cfu/g)	Result (cfu/g)
Aerobic Bacteria	10	1000	<10	Yeast/Mold	10	100	<10

Aixia Sun Lab Director/Principal Scientist
D.H.Sc., M.Sc., B.Sc., MT (AAB)

Definitions are found on page 1

This report shall not be reproduced, without written approval, from ACS Laboratory. The results of this report relate only to the material or product analyzed. Test results are confidential unless explicitly waived otherwise. ACS Laboratory is accredited to the ISO/IEC 17025:2017 Standard.

